

PLATE VII.

- FIG. 1. Last ventral segment of male *P. ferrea* Mels.
 FIG. 2. Same female.
 FIG. 3. ♂ *P. thureura* Say.
 FIG. 4. ♀ *P. thureura* Say.
 FIG. 5. ♂ *P. cyanipes* var. *californica* n. var.
 FIG. 6. ♂ *P. cyanipes* Say.
 FIG. 7. ♀ *P. cyanipes* var. *californica* n. var.
 FIG. 8. ♀ *P. cyanipes* Say.
 FIG. 9. Last ventral segment ♂ *P. montanus* n. sp.
 FIG. 10. ♀ *P. montanus* n. sp.
 FIG. 11. ♂ *P. bridwelli* Van Dyke.
 FIG. 12. ♀ *P. bridwelli* Van Dyke.
 FIG. 13. ♀ *P. debilis* Lec.
 FIG. 14. ♂ *P. fraseri* n. sp.

NOTES ON A RARE BUPRESTIS.

BY W. KNAUS,

McPIERSON, KANSAS.

Buprestis confluenta Say, 1823.

Buprestis confluens Leconte, 1859.

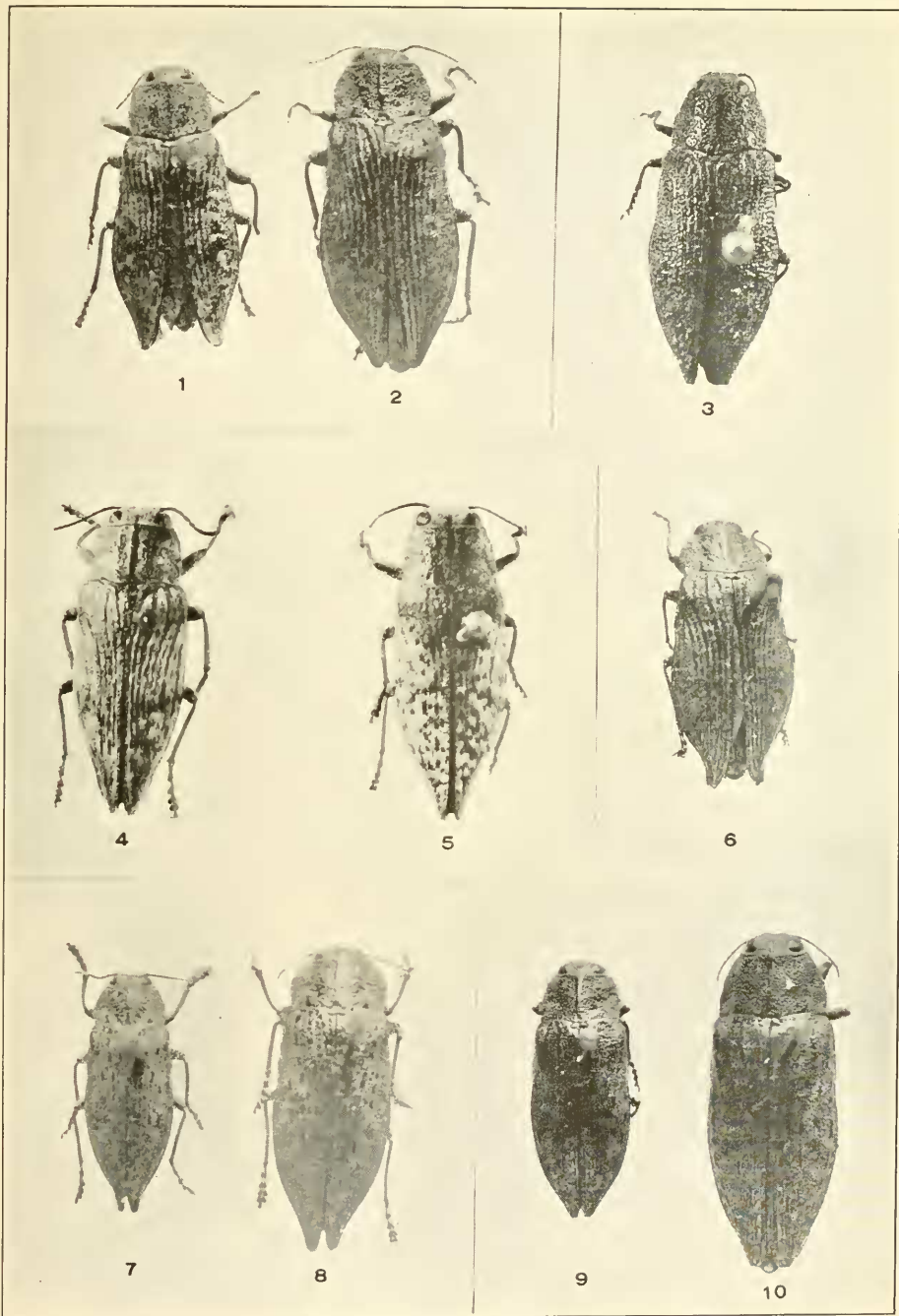
Buprestis tessellata Casey, 1909.

As an example of the laconic taxonomic style of the most famous early North American entomologist, Thomas Say, his description of this species is given as it appears on page 60 of Say's American Entomology, Vol. I, John L. Leconte Editor London Edition, Henry Sothern & Co., 136 Strand, 36 Picadilly and 10 Tower Street, City, 1859:

"*Buprestis Confluenta* [*Confluens*].—Specific character. Green, polished, punctured; elytra with confluent yellow spots.

"*Buprestis confluenta* nobis, Jour. Acad. Nat. Sci., Vol. III, p. 159.

"Desc. Body bright green, punctured; head densely and confluent punctured; an obsolete indented longitudinal line, more distinct on the vertex: antennæ purplish, the basal joint rufous: thorax densely and confluent punctured, more particularly on the anterior and lateral margins; in the middle of the disk, these punctures are somewhat sparse: scutel rounded, convex: elytra striate, slightly tinged with violaceous; the striae and inter-



PECILONOTA.

